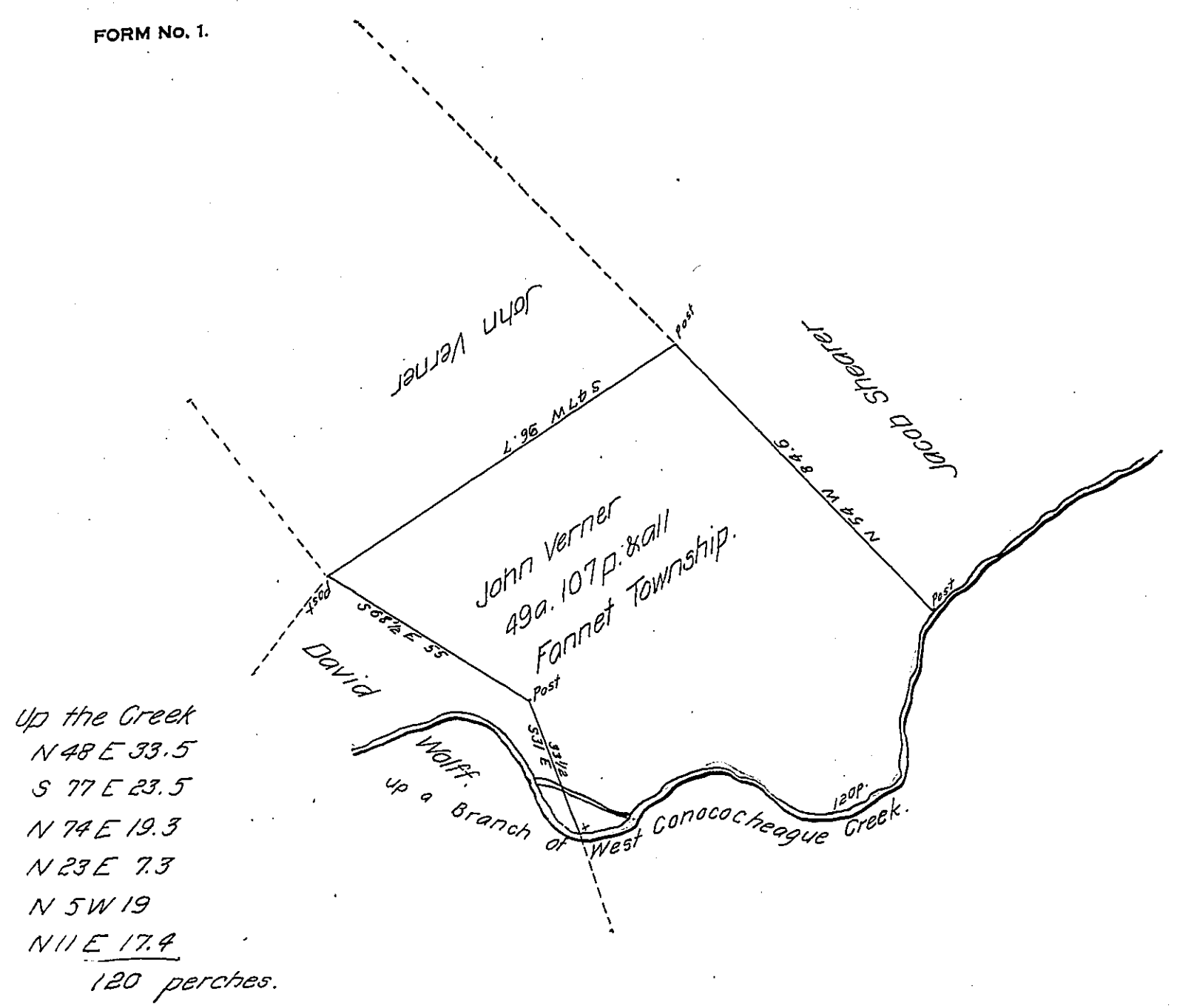


FORM No. 1.



Up the Creek
 N 48 E 33.5
 S 77 E 23.5
 N 74 E 19.3
 N 23 E 7.3
 N 5 W 19
 N 11 E 17.4
 120 perches.

Draught of a tract of Land Situate in Amberson Valley Fannett Township Franklin County Pa. Containing forty nine acres and one hundred and Seven perches Survey'd in pursuance of a warrant ^{on an improvement} granted to John Verner dated November 21st 1851 for fifty acres, Surveyed Nov. 25th 1851.

To Hon. Emanuel Kuhn C.S.

J. Porter Brawley

IN TESTIMONY that the above is a copy of the original remaining on file in the Department of Internal Affairs of Pennsylvania, made conformably to an Act of Assembly approved the 16th day of February 1833, I have hereunto set my hand and caused the Seal of said Department to be affixed at Harrisburg, this *Twenty-fourth* day of *April* 1907.

Isaac N. Brown
 Secretary of Internal Affairs.